



# GAT MONTHLY MEMBERSHIP PROGRESS REPORT

Results as of: 4/30/2024

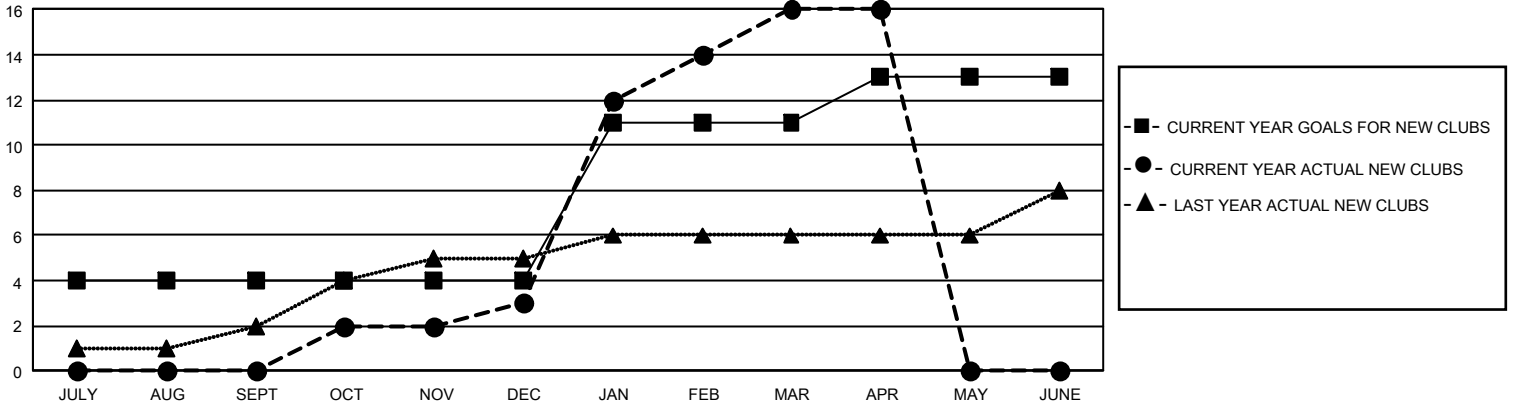
## GMT Constitutional Area 5 - C, Group A

REPORT DOES NOT INCLUDE CLUBS IN UNDISTRICTED AREAS.

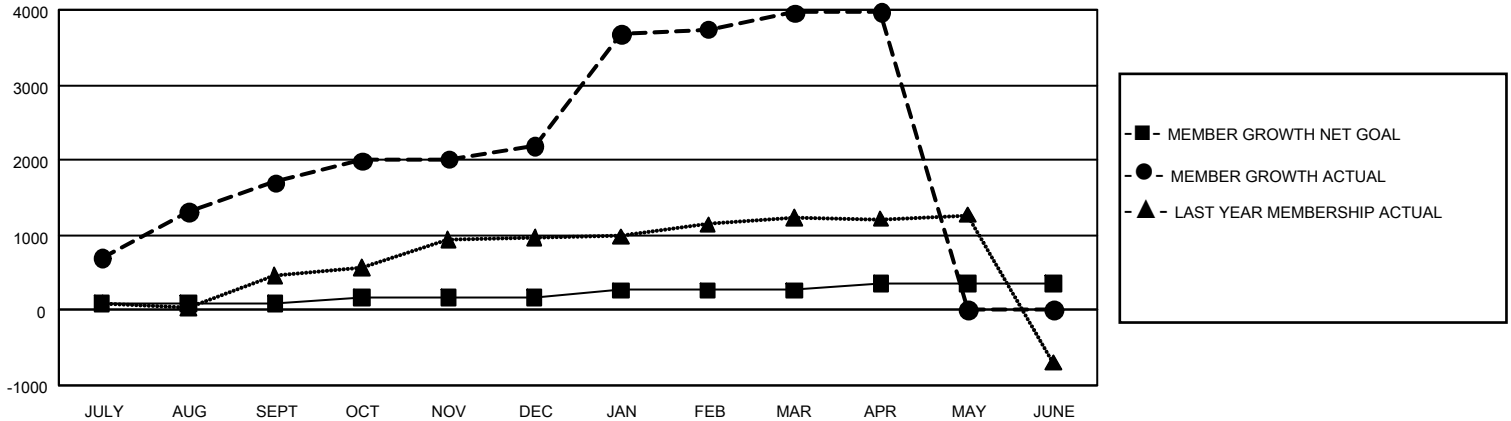
Clubs			
RESULTS FOR 2023-2024			
QUARTER	NEW CLUB GOAL	NEW CLUBS	DROPPED CLUBS
JULY/AUG/SEPT	12	0	2
OCT/NOV/DEC	0	3	3
JAN/FEB/MAR	21	13	0
APR/MAY/JUNE	6	0	0

Members			
RESULTS FOR 2023-2024			
QUARTER	MEMBER GROWTH NET GOAL	MEMBER GROWTH ACTUAL	DROPPED MEMBERS ACTUAL (including transfers)
JULY/AUG/SEPT	80	1,979	154
OCT/NOV/DEC	90	690	161
JAN/FEB/MAR	90	1,869	67
APR/MAY/JUNE	90	33	7

GOALS AND ACTUAL NEW CLUBS CUMULATIVE



GOALS AND ACTUAL MEMBERS CUMULATIVE



<b>DROPPED CLUBS: 5</b>  <b>DROPPED MEMBERS</b> DECEASED 15 CLUB CANCELLED 1 OTHER 372 <b>TOTAL 388</b>	583 CLUBS OF 669 ADDED 1 OR MORE NEW MEMBERS	<b>GENDER DISTRIBUTION</b> MALE 12,585 (63.53%) FEMALE 7,215 (36.42%) NON BINARY 0 (0.00%) PREFER NOT TO ANSWER 9 (0.05%)
	<a href="#">CLICK HERE FOR CUMULATIVE MEMBERSHIP DATA</a>	TOTAL FAMILY UNIT MEMBERS 735 FAMILY MEMBERS PAYING HALF DUES 389